

Gingerbread Geek House Boy Directions

1. Make gingerbread dough. See page 10 and 11 in my ebook for recipes. <http://myvegancookbook.com/epubs>
2. Make gingerbread pieces using the pattern pieces for this style pattern. See page 12 and 13 for more instructions on creating the pieces for your gingerbread creation. Referring to the pattern pieces is helpful as well, they have notes and instructions.

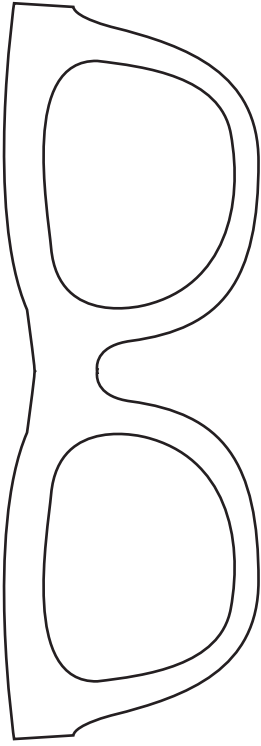
I do have a special tip for this pattern. The glasses are tricky to cut out cause they're small and also intricate. I suggest rolling out enough gingerbread to fit the frames of the glasses on and placing it on a cookie sheet and letting it sit in the freezer for at least 30 minutes. This will stiffen the dough up so it doesn't move around when you try to cut out the glasses.

3. Once you have the pieces you should decorate them with cement icing. Do the following:
 - Make 1 recipe of the cement icing (page 10) and dye it a brownish red. Place this in a 9" icing bag with a #45 Basket weave decorating tip. Now draw stripes going down on the roof panels about 1/2 inch apart from one another. Then ice the bow tie. Empty the bag and wash.
 - Make 1 recipe of the cement icing (page 10) and dye it green. Place this in the 9" icing bag with the same #45 Basket weave decorating tip. Now draw stripes going across the roof panels about 1/2 inch apart from one another. Empty the bag and wash.
 - Make 1 recipe of the cement icing (page 10) and dye black. Black can be achieved by adding equal amounts of all four colors of the food coloring and then adding a bit more blue at the end. Place this in a 9" icing bag with a Round #4 decorating tip. Outline the glasses frames and handles and then draw the eyes. Empty the bag and wash.
 - Make 1 recipe of the cement icing (page 10) and leave white. Place this in a 9" icing bag with a Round #4 decorating tip. Draw white lines in-between the green and red stripes on the roof panel, across and down. Draw the mouth, highlights on the eyes, windows on the side panels, outline of hair, eyebrows, trim bowtie and fingers. Last trim the edges around the gingerbread's trousers and boots.
 - Now using the same icing, apply the hands to the side wall pieces. Make sure you have them aligned correctly. You want to see the iced side of the hands when the house is assembled. Attach the hands with the side panel laying down of course. Then apply some cement icing to the front edge of the pants platform where the pants bottom is attached and attach them. Let this dry turned over, with the pants bottom facing up. Lean it against something to keep it in place. Let all of this dry for at least 12 hours before assembling.

4. Now you can begin constructing the gingerbread. Refer to pages 14 and 15 for a clear demonstration of a general house being constructed. First mix up 1 recipe of cement icing (page 10) and place into a 9" icing bag with a round #4 tip. Put icing on the bottom platform where the walls will be placed on top. Now add a good amount of icing to the beveled side of the walls and join them together on top of the platform. Tie twine around the walls to keep it together while you put the roof on. Being careful not to knock the hands off the side panels. Attach roof by adding cement icing to the top roof corners of the side walls. Place on top and hold for 3 minutes or until the roof sets up enough to let go. The roof was designed to have a gap in the top, don't worry if it appears not to fit together. Put icing on the top trim for roof piece and place on top of the roof, in-between the gap.

GEEKED OUT GINGERBREAD
GLASSES FRAMES

CUT 1



GEEKED OUT GINGERBREAD
TOP TRIM FOR ROOF

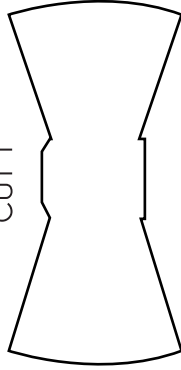
CUT 1



GEEKED OUT GINGERBREAD

BOW TIE

CUT 1

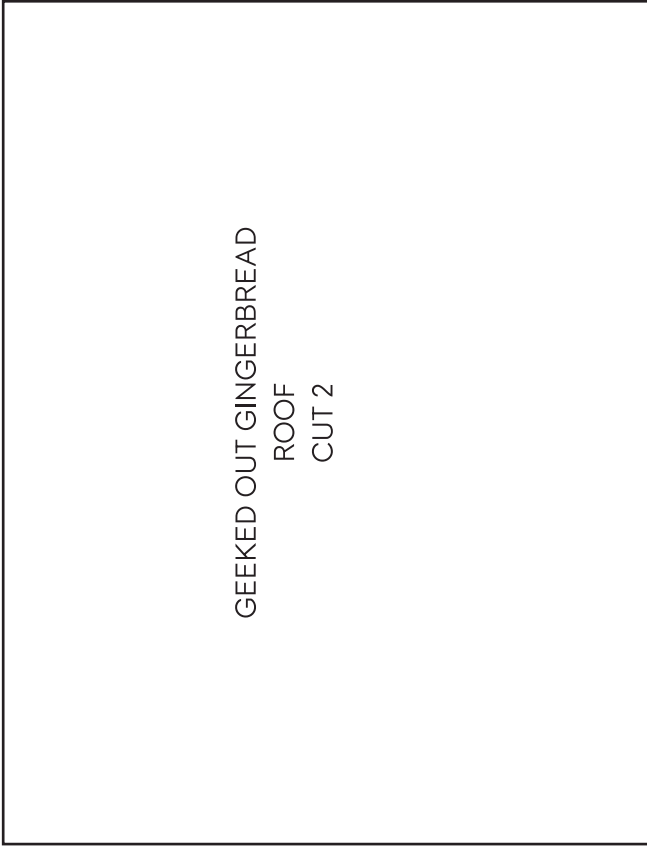


GEEKED OUT GINGERBREAD
GLASSES HANDLES

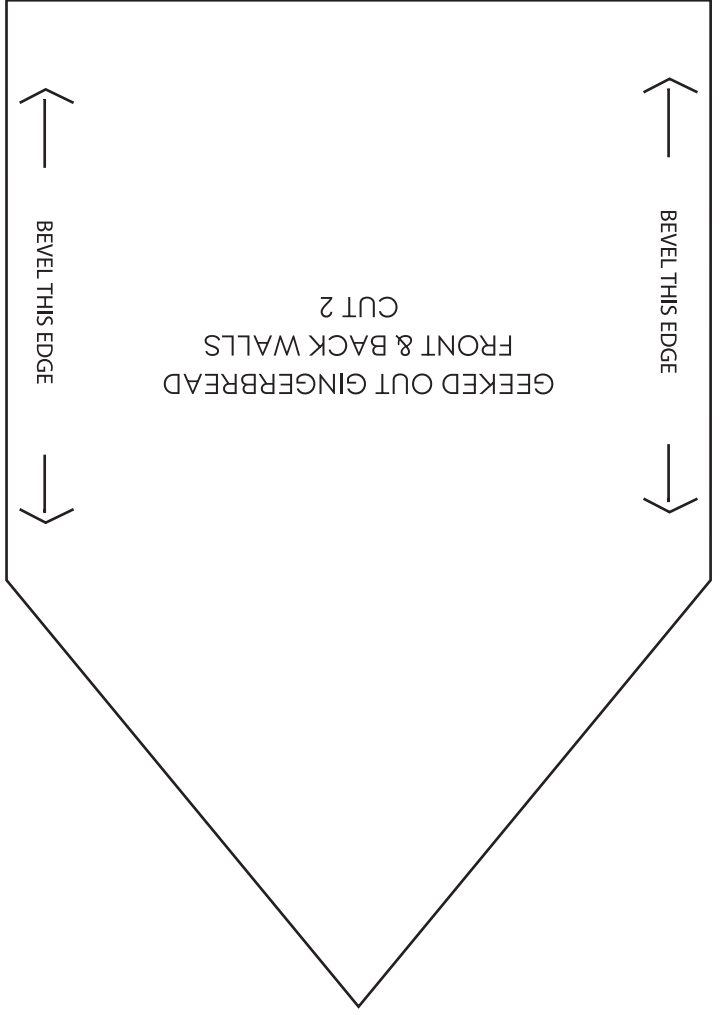
CUT 2



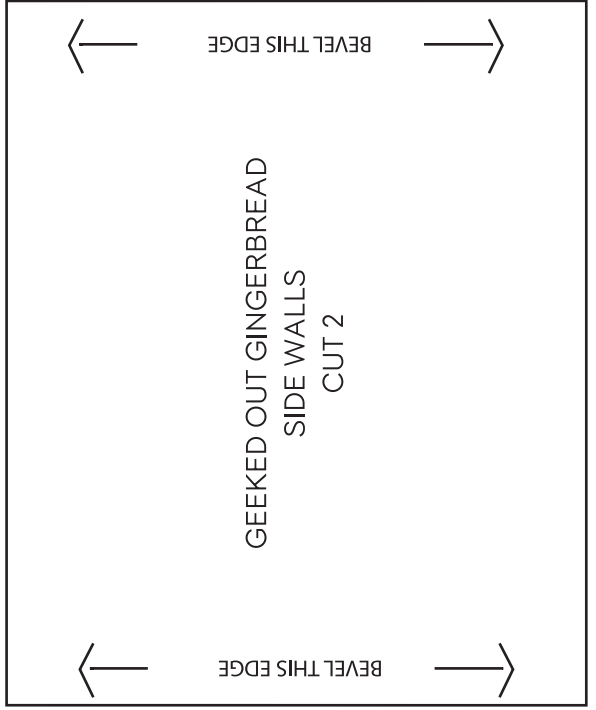
GEEKED OUT GINGERBREAD
ROOF
CUT 2



GEEKED OUT GINGERBREAD
FRONT & BACK WALLS
CUT 2

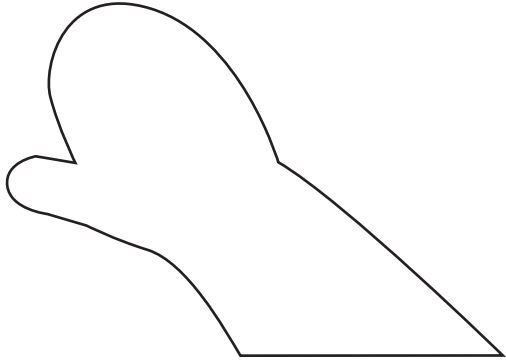


BEVEL THIS EDGE

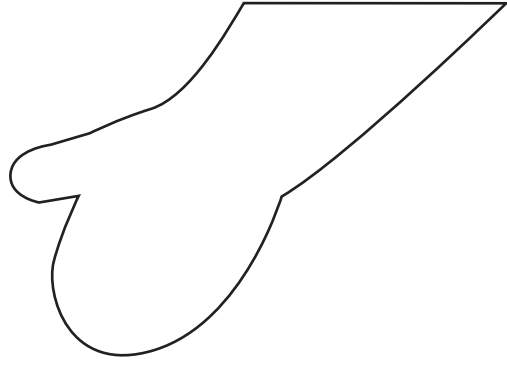


GEEKED OUT GINGERBREAD
SIDE WALLS
CUT 2

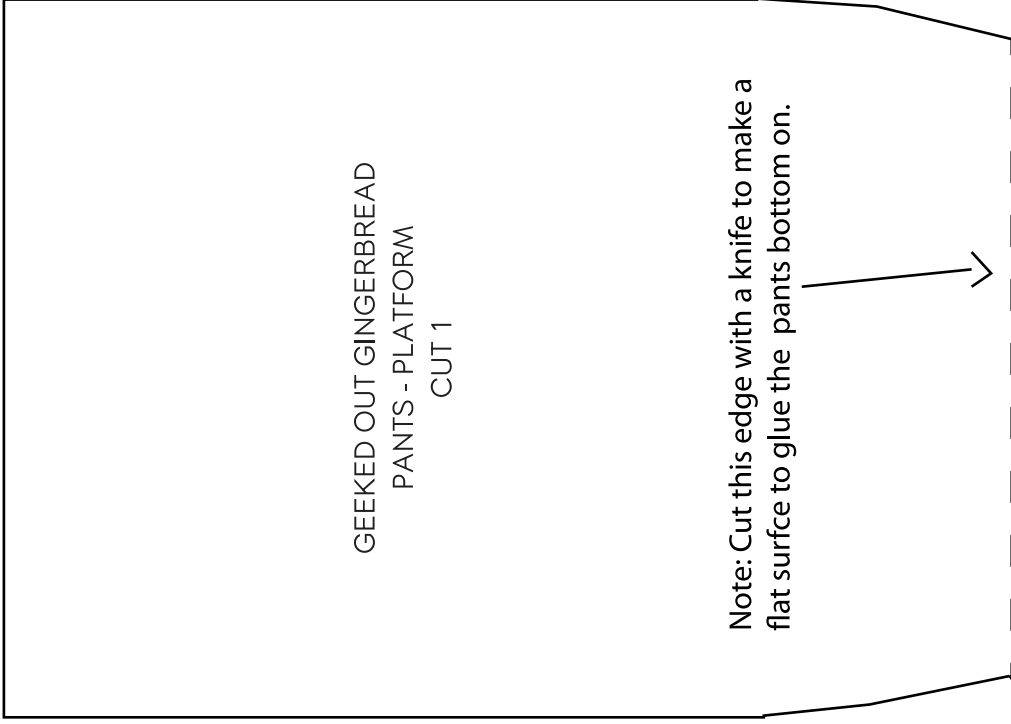
BEVEL THIS EDGE



GEEKED OUT GINGERBREAD
HAND - LEFT
CUT 1

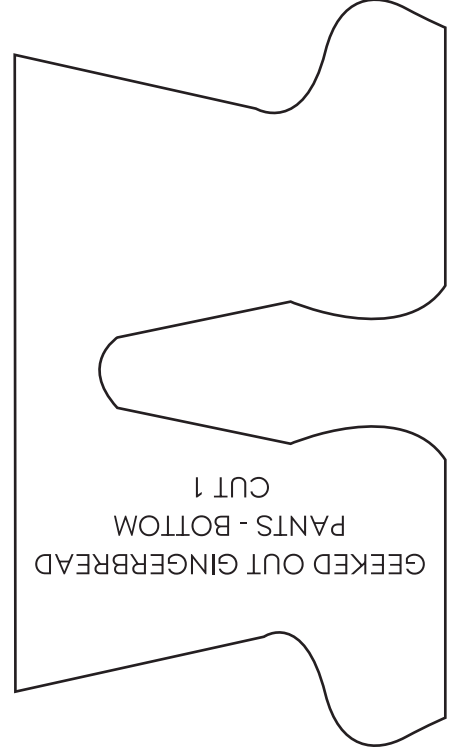


GEEKED OUT GINGERBREAD
HAND - RIGHT
CUT 1

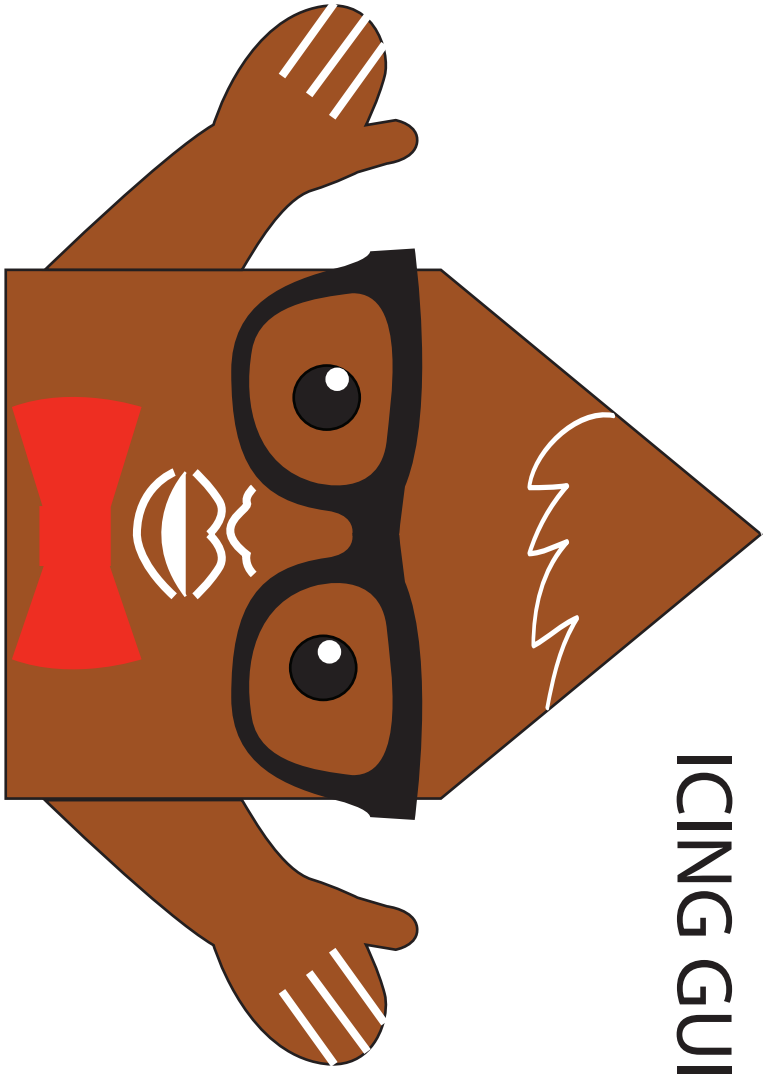


Note: Cut this edge with a knife to make a flat surface to glue the pants bottom on.

GEEKED OUT GINGERBREAD
PANTS - PLATFORM
CUT 1



GEEKED OUT GINGERBREAD
PANTS - BOTTOM
CUT 1



ICING GUIDE

